

hS hayat secret[®]

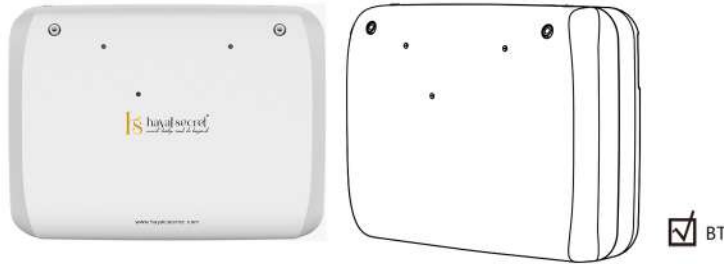
mind, body, soul & beyond

product manual – (Double)



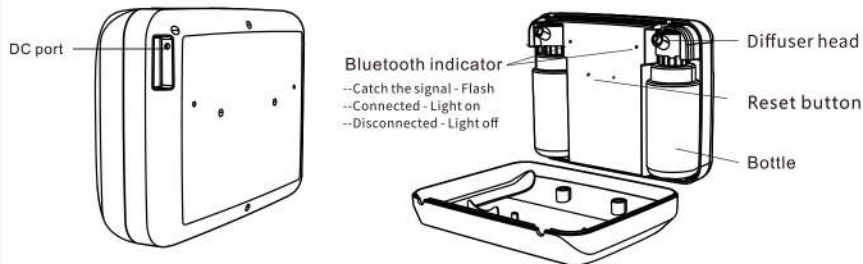
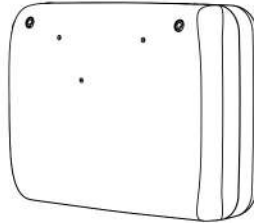
product manual

(Double)



01 Specification

| | |
|----------|--|
| Size | 252*189*78mm |
| Bottle | 250ml*2 |
| Input | DC12V \approx 0.6A MAX |
| Power | 7.2W |
| Coverage | 120m ² /360m ² /12700ft ² |
| N.W. | 1.0kg |
| Material | Plastic |



02 Bluetooth instruction

Where to get the app:

Please Search "Hayat Secret" in Google Play or App Store.

Note:

1. Please make sure that the Bluetooth function is turned on;
2. Please make sure that the location function of the mobile phone is turned on.



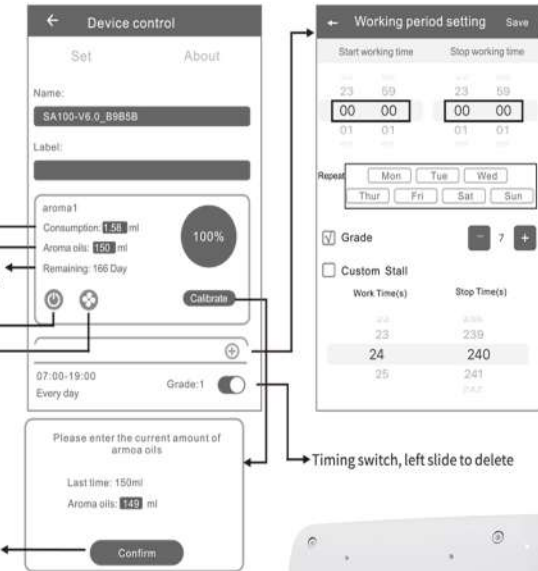
Consumption: This value is calculate based on one hour of continuous machine work with 13 mPa.s aroma oil of our company. But aroma oils with different viscosities have varied consumption rates, you can calibrate it via app.

Aroma oil: The amount of aroma oil added to bottle.

Remaining: This refers to how long the aroma oil can be used based on consumption, aroma oil, grade, and working periods.

Turn ON/OFF the device
Turn ON/OFF the fan

Calibrate: It is used for calibrating consumption. It is advised to calibrate after working for at least 10 days. Please measure the remaining oil of bottle first, then tap "calibrate" in the APP, input the amount of remaining oil, and confirm. So the consumption, remaining day, and percentage will be updated.

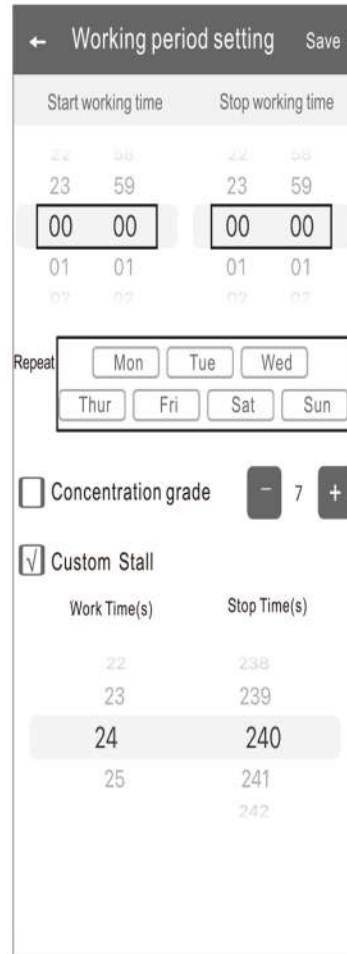
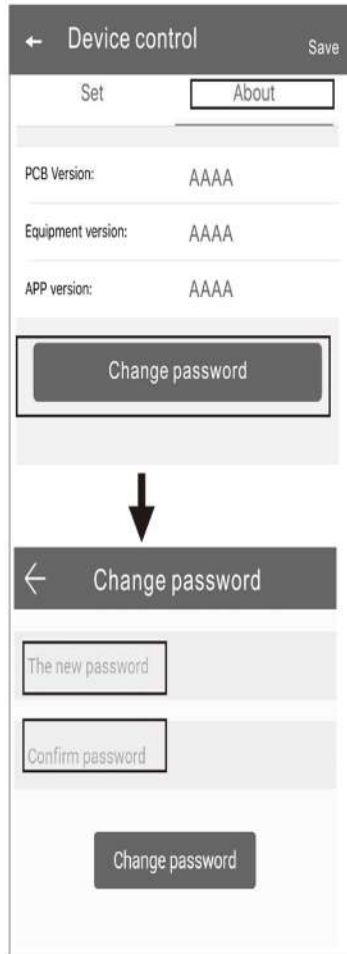


Hayat Secret App



product manual

Amend password



Slide up and down to adjust

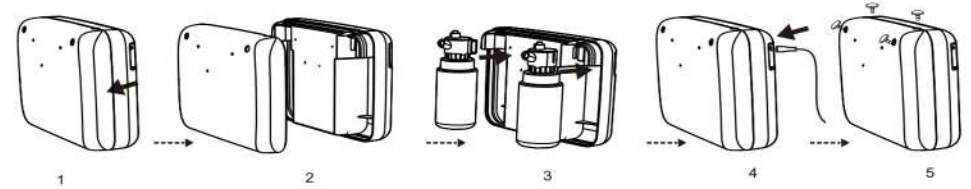
Select the day

Select grade

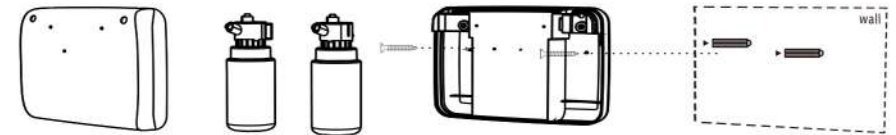
Repeat

If you forget the password, please press the reset button to restore the factory setting. The factory settings password is 8888.

03 Installation method



1. Pull forward the front cover of machine (the front cover is fixed on the back cover by magnetic adsorption).
2. Open the machine front cover.
3. Attach the atomizer head to the bottle and align the atomizer head to the correct position in the machine.
4. Close the machine front cover and connect the power (When the first time connected to the power, please wait about 12 minutes, then the machine will start working.)
5. Choose vertical or horizontal diffusion. Place stopper in diffuser head that will not be used.



Fix two screws on the wall, and then hang the machine to the screws.

04 Concentration and consumption

| Grades | Work time(s) | Stop time(s) | Consumption(g/h) |
|-----------|--------------|--------------|------------------|
| G1 | 5s | 240s | 0.078 |
| G2 | 10s | 220s | 0.160 |
| G3 | 15s | 200s | 0.249 |
| G4 | 15s | 180s | 0.465 |
| G5 | 20s | 160s | 0.570 |
| G6 | 20s | 120s | 0.586 |
| G7 | 25s | 100s | 0.645 |
| G8 | 25s | 80s | 0.749 |
| G9 | 25s | 60s | 0.783 |
| Customize | 5-25s | 60-600s | — |

Note: The data shown above is only for reference, and it is normal for consumption to fluctuate by 15%.

product manual

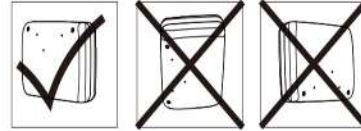
05 ⚠ Warning

1. Please keep the machine vertical. Tilting or lying flat may cause oil to spill affecting/damaging the machine.

2. Shall not modify, disassemble or repair the machine. If any failure happens to the machine, please contact our technical personnel.

3. Do NOT use quick charger for device.

4. When the machine is being used for the first time or hasn't been used for more than 7 days, the controlling board is out of power. Please plugin and wait for 1-2 minutes, the machine will turn on automatically.



06 Troubleshooting

Before asking to have the machine repaired, please use the chart below to diagnose the problem and solution.

| Problem | Solution |
|------------------|--|
| Does not diffuse | -Check whether the mode you choose is correct or not. -Check if the machine is during "Non-Working period" -Air pump may be damaged, change to new one. -Check whether the tube is loose or not |
| Low diffuse | -The atomizing core is blocked, clean by alcohol or change a new component. -Check whether the gasket is damage/loose or not. -Check whether the tube is loose or not |
| Oil spill | -Check whether the bottle is loose or not -The gasket in the atomized head is damaged or loose. |
| Oil sprinkle | -The atomized head is damaged, change to new one -The machine is tilted or laying down, keep machine vertical. |
| Abnormal noise | -The air pump is loose, retighten the pump -The air pump is damaged, change to new one. |

07 Equipment cleaning

The machine needs to be cleaned when below situations happen:

1. You're about to change to another kind of essential oil.
2. The atomization volume becomes weak.
3. We recommend cleaning machine by diffusing isopropyl alcohol once a month.


Cleaning steps:

1. Remove fragrance bottle and atomizing head
2. Fill 1/8 of the fragrance bottle with industrial alcohol (isopropyl alcohol)
3. Re-attach atomizing head to fragrance bottle and diffuse for 2-3 minutes.
4. Air out the fragrance bottle and the atomizing head.



hs hayat secret[®]
mind, body, soul & beyond

Thank You For Reading

Unravelling the secrets of nature to nurture the mind, body and soul |  info@hayatsecret.com