

hs hayat secret[®]
mind, body, soul & beyond

product manual – (Mini Tower)



Unravelling the secrets of nature to nurture the mind, body and soul



info@hayatsecret.com

product manual

(Mini Tower)



01 Specification

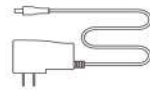
[Size]	112*112*293mm
[Bottle]	120ml
[Input]	DC12V = 1A MAX
[Power]	4.5W
[Coverage]	100m ² /150m ³ /5300ft ³
[N.W.]	0.95 kg
[Material]	aluminum



Bottle



Bottle cap



Power adapter



Manual

Note:

Check and make sure the packaging is complete when you first open it, If there is any problem please contact with us soon.

02 Bluetooth instruction

Where to get the app:

Please Search " Hayat Secret " in Google Play or App Store.

Note:

1. Please make sure that the Bluetooth function is turned on;
2. Please make sure that the location function of the mobile phone is turned on.

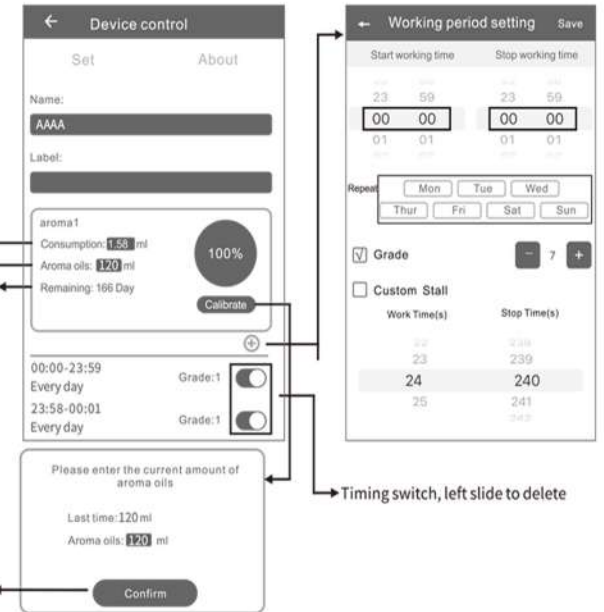


Consumption: This value is calculate based on one hour of continuous machine work with 13 mPa.s aroma oil of our company. But aroma oils with different viscosities have varied consumption rates, you can calibrate it via app.

Aroma oil: The amount of aroma oil added to bottle.

Remaining: This refers to how long the aroma oil can be used based on consumption, aroma oil, grade, and working periods.

Calibrate: It is used for calibrating consumption. It is advised to calibrate after working for at least 10 days. Please measure the remaining oil of bottle first, then tap "calibrate" in the APP, input the amount of remaining oil, and confirm. So the consumption, remaining day, and percentage will be updated.



Timing switch, left slide to delete

Hayat Secret App



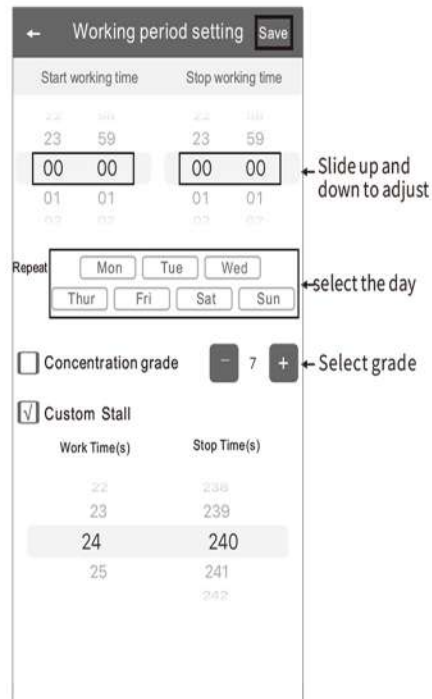
product manual



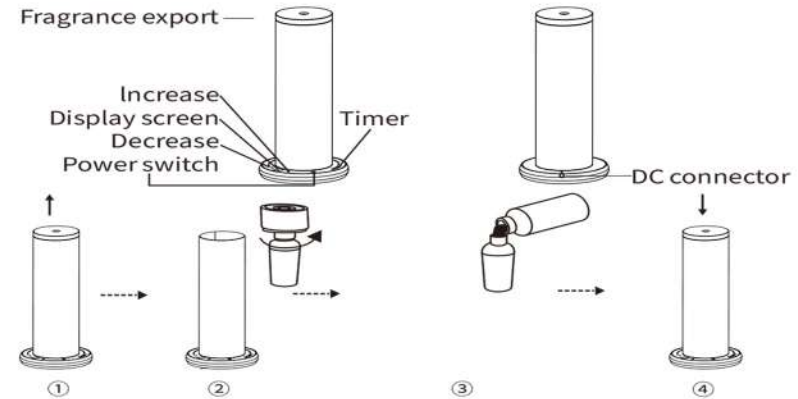
Amend password



If you forget the password, please press th on/off button to restore the factory setting. The factory settings password is 8888.



03 Installation step



1. Take out the diffuser head;
2. Twist off the bottle;
3. Fill the bottle with essential oil;
4. Put the diffuser head back in the machine.

04 Operations

power on

Connect to 12V 1A power supply, there is "beep" sound coming out.

power off

Press ⊕ to turn off the machine

Intensity setting

The machine has 10 intensity levels, Press ⊕ to increase the intensity, press ⊖ to decrease the intensity.

Power indicator

↔ indicates the direction of the power supply.

Timer

Press the timer button, and the settings cycle in turn, 1H->2H->4H->8H->no timer

Reset Bluetooth App password

press and hold ⊕ for 3 seconds to reset password to 8888.

05 Intensity and oil consumption

Grade	Work time(s)	Stop time(s)	Consumption(g/h)
G1	5s	240s	0.05
G2	10s	220s	0.11
G3	15s	200s	0.18
G4	15s	180s	0.25
G5	20s	160s	0.32
G6	20s	120s	0.46
G7	25s	100s	0.60
G8	25s	80s	0.74
G9	25s	60s	0.88
Customized	5-25s	60-600s	—

Note: The data shown above is only for reference, and it is normal for consumption to fluctuate by 15%.

product manual

06 ⚠ Warning

1. Please keep the machine vertical after installation. Tilting or lying flat can cause oil to overflow, and the circuit board may be contaminated, which could affect its efficiency;
2. Should not modify, dismantle or repair the machine arbitrarily. Any malfunction occurs, please contact the relevant technician immediately.



07 Troubleshooting

Before asking to have the machine repaired, please try to diagnose the problem first based on the following instructions.

Breakdown	Solution
No diffuse	- Check if the power is ON or OFF; - Check if the pump is damaged, if yes, please replace a new one. - If there is no diffusion or it is weak, replace the oil by rubbing alcohol and run it through the machine for 5 minutes.
Weak diffusion	- Atomization head may be blocked. Clean the diffuser by alcohol or replace a new atomized core - The atomized core with straw may be missed or damaged. Replace with a new one; - The Pump may be damaged and may need to replace with a new one
Oil sprinkle	- The atomized core may be damaged please replace with a new one - The machine is tilted or lay flat, please make it upright.
Oil leakage	- The bottle may be loose, make sure to screw it properly. - The seal gasket may be loose, please replace with a new one
Abnormal sound	- The air pump may be loose or damaged, please tighten it or replace a new one.
No display on screen	- Make sure the power is ON; - The plug may be damaged, try another electric outlet, or replace with a new plug - The display screen may be damaged, please contact our relevant personnel

08 Equipment cleaning

The machine needs to be cleaned when the following situations happen:

1. You're about to replace with another essential oil;
2. The atomization volume becomes weak .


Cleaning steps:

1. Find a clean bottle and fill it with industrial alcohol;
2. Install this bottle to the machine and turn the machine on.
Let it work for 5-10 minutes;
3. Turn the machine off, and the cleaning is finished



hs hayat secret[®]
mind, body, soul & beyond

Thank You For Reading

Unravelling the secrets of nature to nurture the mind, body and soul |  info@hayatsecret.com