

hS hayat secret[®]

mind, body, soul & beyond

product manual - (Prime)



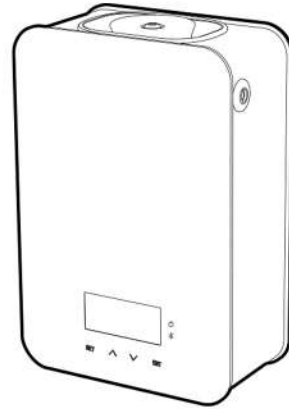
Unravelling the secrets of nature to nurture the mind, body and soul



info@hayatsecret.com

product manual

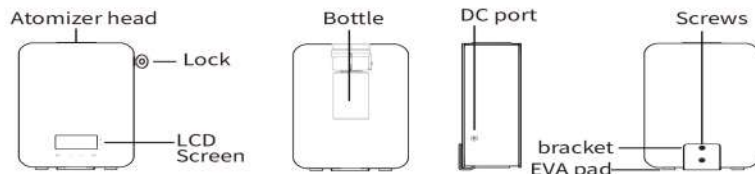
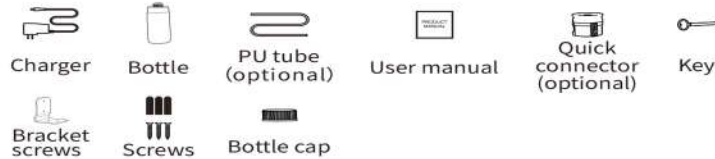
(Prime)



- BT
- LCD
- V2.0

01 Specification

| | |
|----------|--|
| Size | 260*175*89mm |
| Bottle | 180ml |
| Input | DC12V = 1A MAX |
| Power | 6W |
| Coverage | 130m ³ /400m ³ /14100ft ³ |
| N.W. | 1.88 kg |
| Material | plastic, aluminum, glass |



02 Bluetooth instruction

Where to get the app:

Please Search "Hayat Secret" in Google Play or App Store.

Note:

- Please make sure that the Bluetooth function is turned on;
- Please make sure that the location function of the mobile phone is turned on.



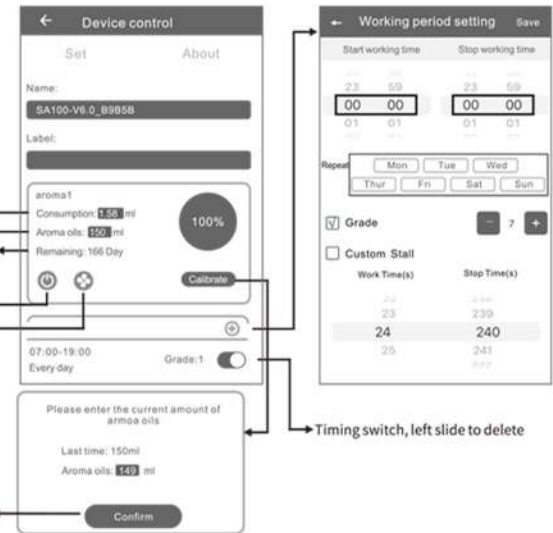
Consumption: This value is calculate based on one hour of continuous machine work with 13 mPa.s aroma oil of our company. But aroma oils with different viscosities have varied consumption rates, you can calibrate it via app.

Aroma oil: The amount of aroma oil added to bottle.

Remaining: This refers to how long the aroma oil can be used based on consumption, aroma oil, grade, and working periods.

Turn ON/OFF the device
Turn ON/OFF the fan

Calibrate: It is used for calibrating consumption. It is advised to calibrate after working for at least 10 days. Please measure the remaining oil of bottle first, then tap "calibrate" in the APP, input the amount of remaining oil, and confirm. So the consumption, remaining day, and percentage will be updated.

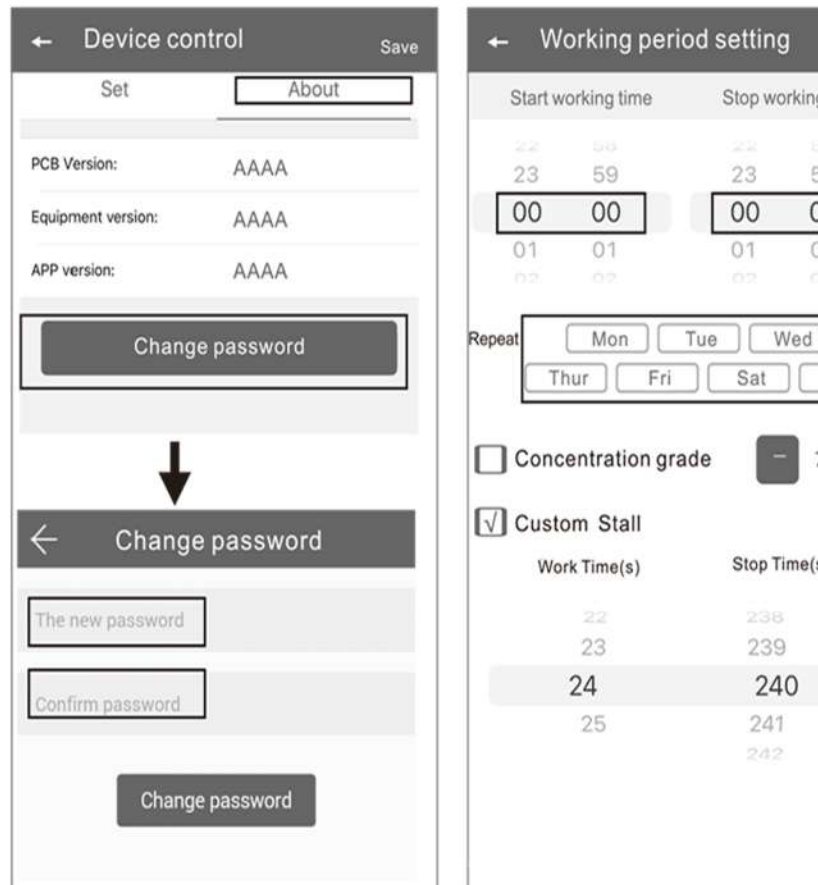


Hayat Secret App



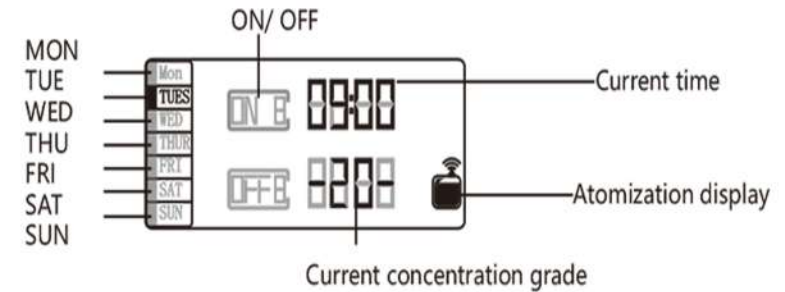
product manual

Amend password



If you forget the password, please press the reset button to restore the factory setting. The factory settings password is 123456.

03 LCD time setting



Turn on the power

Connect the power and turn on the switch with a sound "Beep" coming out, then the screen shows the initial time and the current grade.

Turn off the power

The screen will be off when you turn off the switch and disconnect the power.

Fan control

Long press and hold ▲ for 3 seconds to turn on the fan, then long press and hold ▼ for 3 seconds to turn off the fan.

Screen lock or unlock

Screen lock: If there is no any operation in 60s, the screen will be locked automatically.

Unlock: Tap the SET button and hold for 3 seconds, the screen will be unlocked, and the screen is lit up.

Current time setting

1. Tap SET button and hold for 3 seconds until the "beep" sound coming out, you can start to set the working periods.

2. Tap ▲ or ▼ to select the current working day, then tap ENT to start to set the current time, Tap ▲ or ▼ to adjust the current time, then tap SET to save the setting.

(shown as picture 1)

Concentration Grade setting

There are 9 grades available. Tap ▲ button to increase the scent concentration.

Tap ▼, to decrease the scent concentration. (Shown as picture 2)



SET ▲ ▼ ENT
(1)



SET ▲ ▼ ENT
(2)

product manual

Working periods setting

1. There are total 5 working periods available (show as picture 3).
2. Tap SET to start setting the first working period, and the working time will be flashing on the screen.
3. Tap ▲ or ▼ to adjust the working time, then confirm by tapping ENT.
4. Tap ENT can turn to the next setting (order: the switch of the current working periods → start/stop working time → grades → working day → the next working period), then you can tap ▲ or ▼ to adjust the current setting. (show as picture 5).

The start working time can not be same with the stop working time, otherwise this working period will not be displayed on APP.

| Day | 00:00 | 00:00 | 00:00 | 00:00 | 00:00 |
|-------|--------|--------|--------|--------|--------|
| Mon | ON/OFF | ON/OFF | ON/OFF | ON/OFF | ON/OFF |
| Thues | ON/OFF | ON/OFF | ON/OFF | ON/OFF | ON/OFF |
| Wed | ON/OFF | ON/OFF | ON/OFF | ON/OFF | ON/OFF |
| Thur | ON/OFF | ON/OFF | ON/OFF | ON/OFF | ON/OFF |
| Fri | ON/OFF | ON/OFF | ON/OFF | ON/OFF | ON/OFF |
| Sat | ON/OFF | ON/OFF | ON/OFF | ON/OFF | ON/OFF |
| Sun | ON/OFF | ON/OFF | ON/OFF | ON/OFF | ON/OFF |

(PS: The first working period is factory defaults with start working time 07:00 and stop working time 19:00, others are all with 00:00.)



SET ▲ ▼ ENT
(3)



SET ▲ ▼ ENT
(4)



SET ▲ ▼ ENT
(5)

04 Operation Step

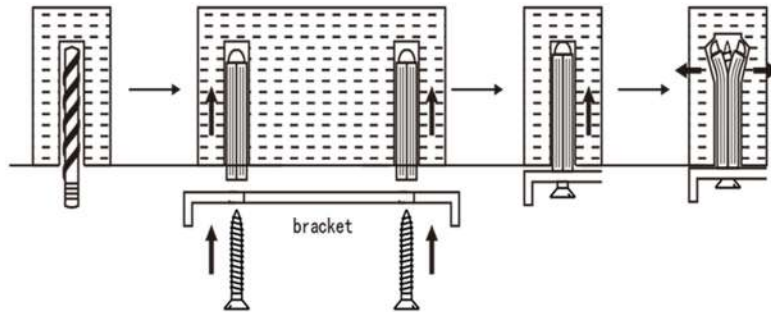
1. Open the machine with key, and don't remove the key
2. Pull out the atomizer head
3. Take out the bottle, and fill with essential oil, then tightly close the head.
4. Place the bottle back into the machine, after aligning with the position, press downward the atomizer head.
5. Adjust the working periods, the lock the machine with key.

05 Concentration and Consumption

| Grade | Work time(s) | Stop time(s) | Consumption(g/h) |
|------------|--------------|--------------|------------------|
| G1 | 15s | 300s | 0.05 |
| G2 | 15s | 150s | 0.10 |
| G3 | 20s | 120s | 0.15 |
| G4 | 20s | 85s | 0.20 |
| G5 | 25s | 80s | 0.25 |
| G6 | 30s | 75s | 0.30 |
| G7 | 30s | 60s | 0.35 |
| G8 | 30s | 50s | 0.40 |
| G9 | 30s | 40s | 0.45 |
| G10 | 30s | 33s | 0.50 |
| G11 | 33s | 30s | 0.55 |
| G12 | 40s | 30s | 0.60 |
| G13 | 50s | 30s | 0.66 |
| G14 | 60s | 30s | 0.71 |
| G15 | 75s | 30s | 0.76 |
| G16 | 80s | 25s | 0.81 |
| G17 | 85s | 20s | 0.86 |
| G18 | 120s | 20s | 0.90 |
| G19 | 150s | 15s | 0.96 |
| G20 | 300s | 15s | 1.01 |
| Customized | 5-300s | 5-300s | -- |

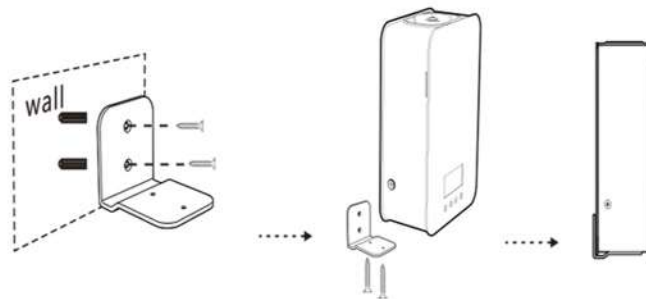
product manual

06 Installation method



Drill holes in the wall, and insert the wall anchors into the hole, then secure the bracket with screws.

installation Step



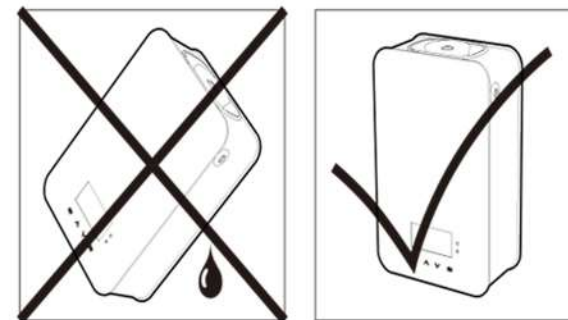
1. Position the bracket holes, then drill holes on the wall, then insert the wall anchors into the wall holes.
2. Secure the bracket with screws on the wall, and align with the holes of the machine on the bottom, then secure the machine with screws from the bottom.

07 ⚠ Warning

1. Please always keep the machine upright, tilting or placing it flat will cause oil leakage, which will lead to machine damage.
2. Shall not modify, disassemble or repair the machine arbitrarily. Any failure happens, please contact our relevant technicians in time.
3. The machine will not work when it is not in the working periods, even the atomization icon is displayed on the screen.
4. When the screen is in lock status, the button cannot be operated and there is no display on the screen.
5. If the display is garbled, breakdown or other problems, please restart the machine.

Restore factory setting

(Step: Tap the ENT button and hold about 3 seconds until the "beep" sound coming out.)



product manual

08 Cautions

Before asking to have the machine repaired, please try to diagnose the problem first following to below instructions.

| Breakdown | Solution |
|-------------------------------|--|
| No diffuse | - Check if the power is ON or OFF; - The pump is damaged and needs replacing; - If there is no diffusion or it is weak, replace the oil with rubbing alcohol and run it through the machine for 5 minutes. |
| Little or no spray coming out | - Atomization head is blocked. Clean diffuser by running rubbing alcohol through it. Or replace diffuser core; - Diffuser core with straw is missing or damaged. Replace with a new one; - Pump is damaged and may need replacing. |
| Diffuser spraying liquid | - Diffuser core is damaged, Replace diffuser core. - Machine is tilted or angled, Make sure it's upright at all times. |
| Oil leaking | - Bottle is loose. Screw it in properly and straight; - Seal is broken or missing. Replace the supplied seal that came with the machine. |
| Abnormal sound | - Pump is loose or damaged, Tighten the pump or replace. |
| No display on screen | - Make sure the power is ON; - Check the plug for damage, Try another outlet, If plug is damaged replace; - Display screen is damaged, Replace. |

09 Troubleshooting

The machine needs to be cleaned when below situations happen:

1. You're about to change to another essential oil;
2. The atomization volume becomes weak .

Cleaning steps:

1. Find a clean bottle and fill it with industrial alcohol;
2. Install this bottle to the machine and turn the machine on. Let it work for 5-10 minutes;
3. Turn off the electric, finish the cleaning.



hs hayat secret[®]
mind, body, soul & beyond

Thank You For Reading

Unravelling the secrets of nature to nurture the mind, body and soul |  info@hayatsecret.com